

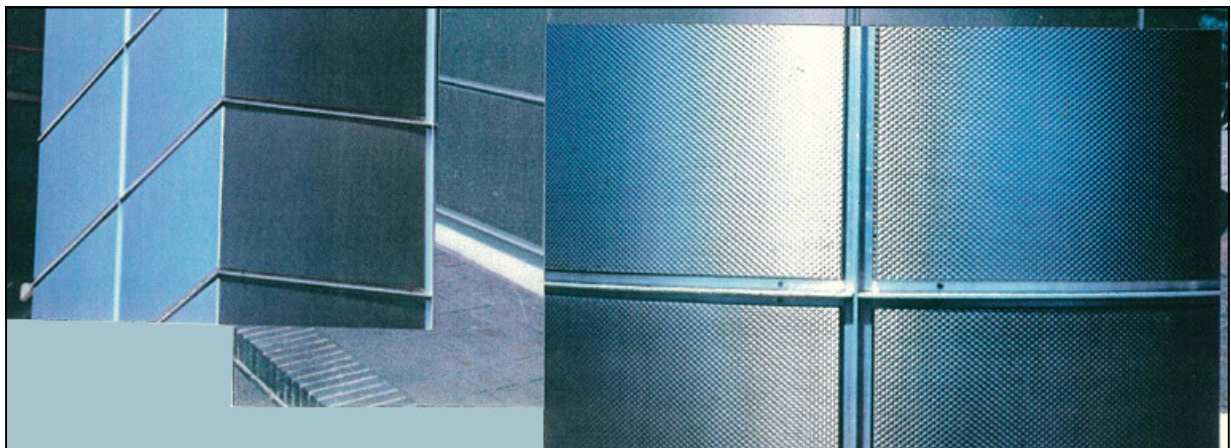
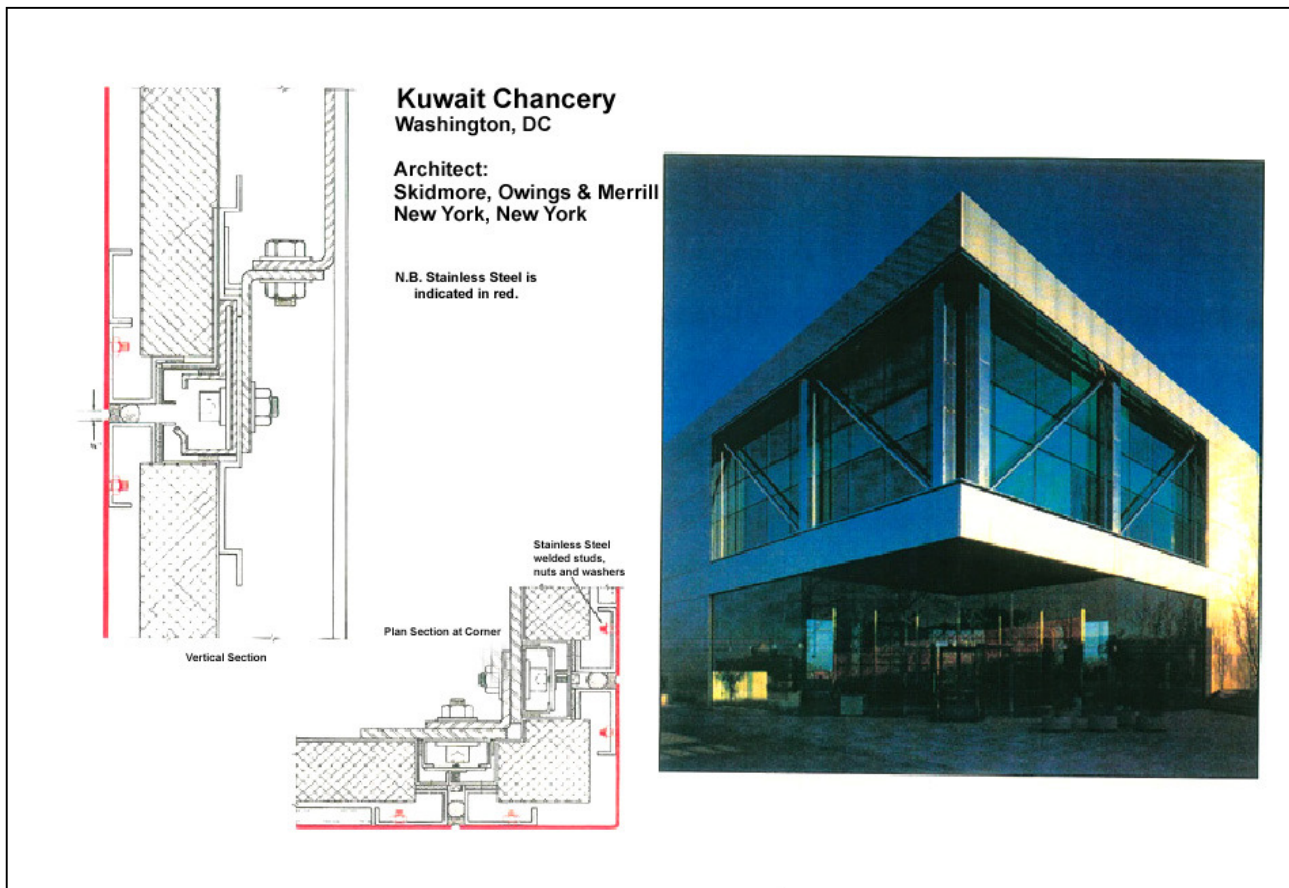
## ARCHITECTURAL FIXING & JOINS

This leaflet displays examples of architectural fixing and joins.

### GENERAL INFORMATION

- ◆ Rimex products can be fixed using glue/screws to MDF board.
- ◆ We recommend using a thicker material if the Rimex finish is to be fixed to a frame.
- ◆ Avoid thin gauges if sticking material down flat to a flat surface.

### EXAMPLES OF ARCHITECTURAL JOINS



## EXAMPLES OF COMMON FIXING METHODS

### VARIOUS ARCHITECTURAL JOINTS

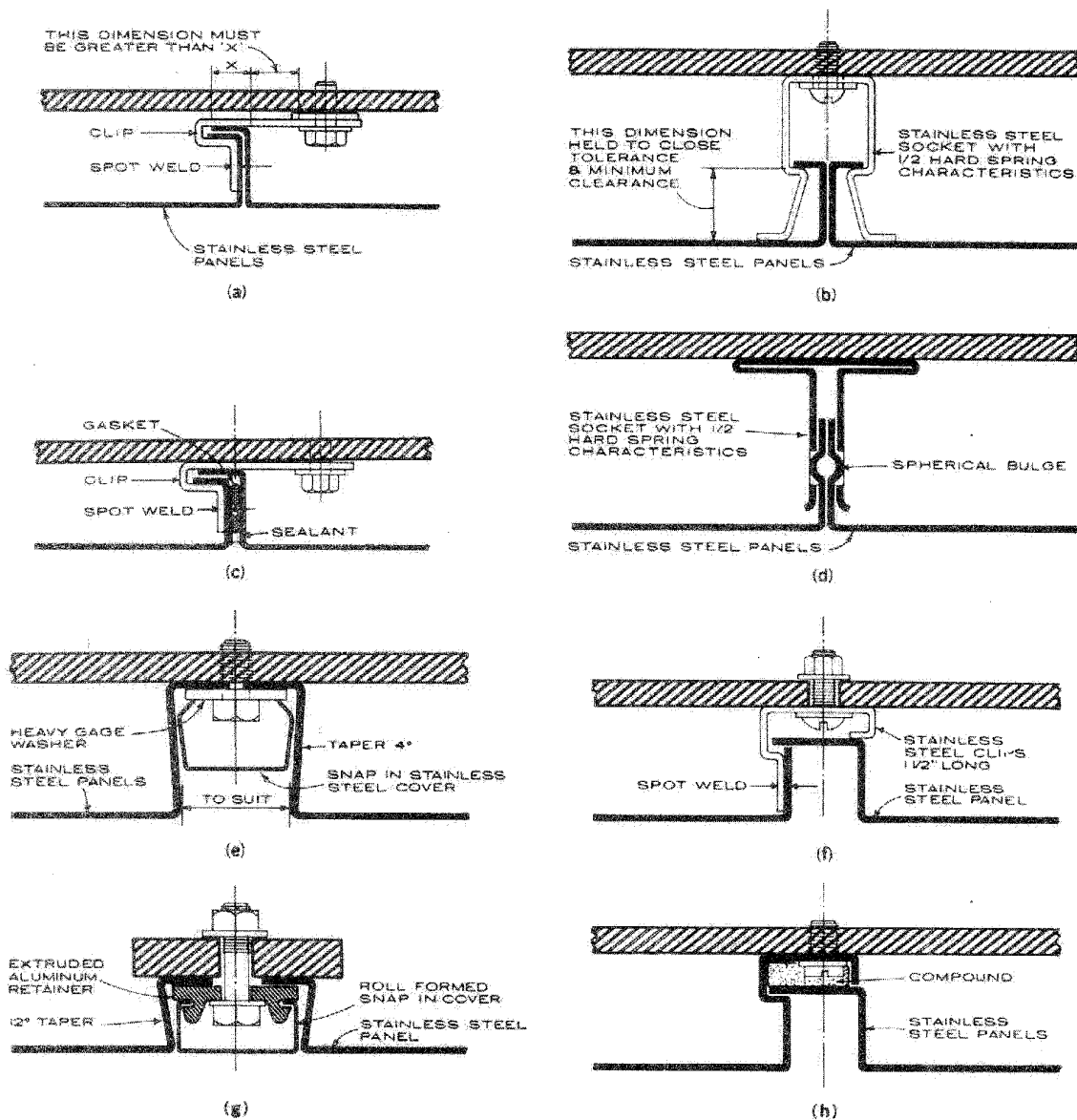


Figure 5. Typical architectural joints. (a) Standard joint; (b) typical snap-in panel joint; (c) interlocking flanged joints; (d) typical removable snap-in panel joint; (e) recessed panel joint; (f) interlocking recessed panel joint; (g) recessed panel joint with flush snap-in cover; (h) interlocking recessed panel joint with sealant.

\* Extract taken from NiDI Technical Series No 10 037  
'Stainless Steel in Architecture' by Bernard A. Smits.