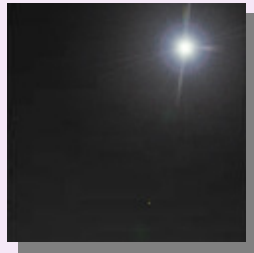
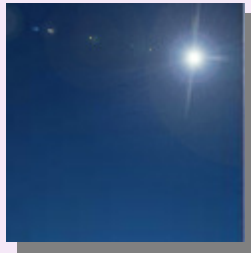


COLOURED MIRRORS & SATINS

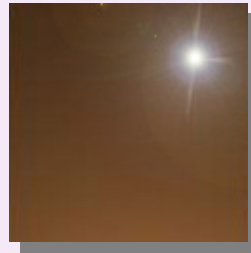
MIRRORS



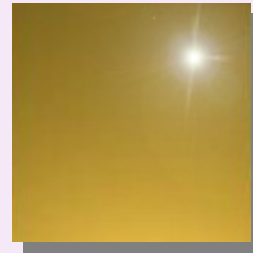
Black



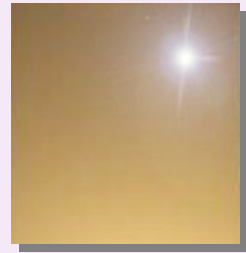
Blue



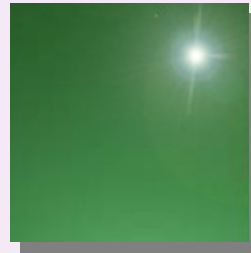
Bronze



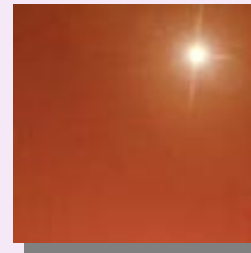
Gold



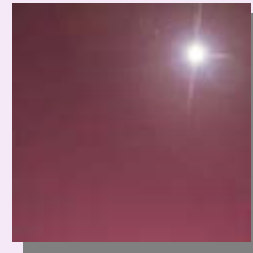
Champagne



Green



Rosy Gold

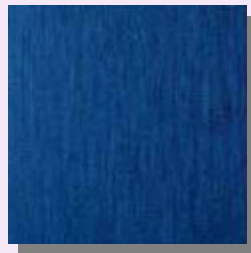


Purple

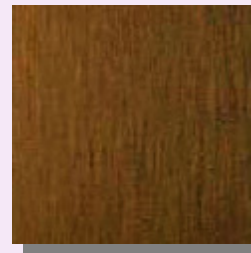
SATINS



Black



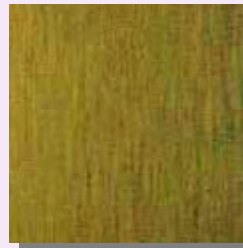
Blue



Bronze

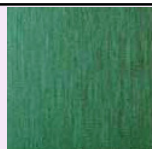


Champagne



Gold

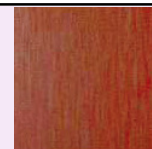
INDENT COLOURS



Green Satin



Purple Satin



Rosy Gold Satin

COLOURED MIRRORS & SATINS

EX STOCK

Stainless Steel is coloured by the interference of light process. There are no paints, dyes or pigments involved in the process and the colours are totally colourfast.

- Mirror finish is similar standard to glass mirror (No.8)
- Satin finish is equivalent of No.4 finish.

Finishes: Mirror and Satin

Colours available: Black, Blue, Bronze, Champagne, Gold, Green, Rosy Gold, Purple

N.B. Green, Rosy Gold and Purple stocked in Mirror finish only, Satin finish for these colours are Indent.

Sheet sizes:

2500 x 1250 x 0.8mm*

3000 x 1250 x 0.8mm* (Black & Bronze only)

*sheets have usable width of approx. 1230mm due to gripper marks/suspension holes down one edge of sheet from colouring process

Lead Time: Approx. 2 - 3 working days. subject to material availability

INDENT

Finishes: Mirror & Satin

Colours available: Black, Blue, Bronze, Champagne, Gold, Green, Purple, Rosy Gold

Lengths: Any length up to 3000mm (standard lengths are 2500mm & 3000mm)

Widths: 1250mm & 1000mm

Thicknesses: 0.8mm, 1.0mm, 1.2mm, 1.5mm, 2.0mm

Lead Time: Approx. 12 - 14 weeks ex works (shipped via Seafreight)
Approx. 6 - 8 weeks ex works (shipped via Airfreight)

N.B. Material can be freighted economically from the UK with other stock orders, so there are no minimum requirements except time.